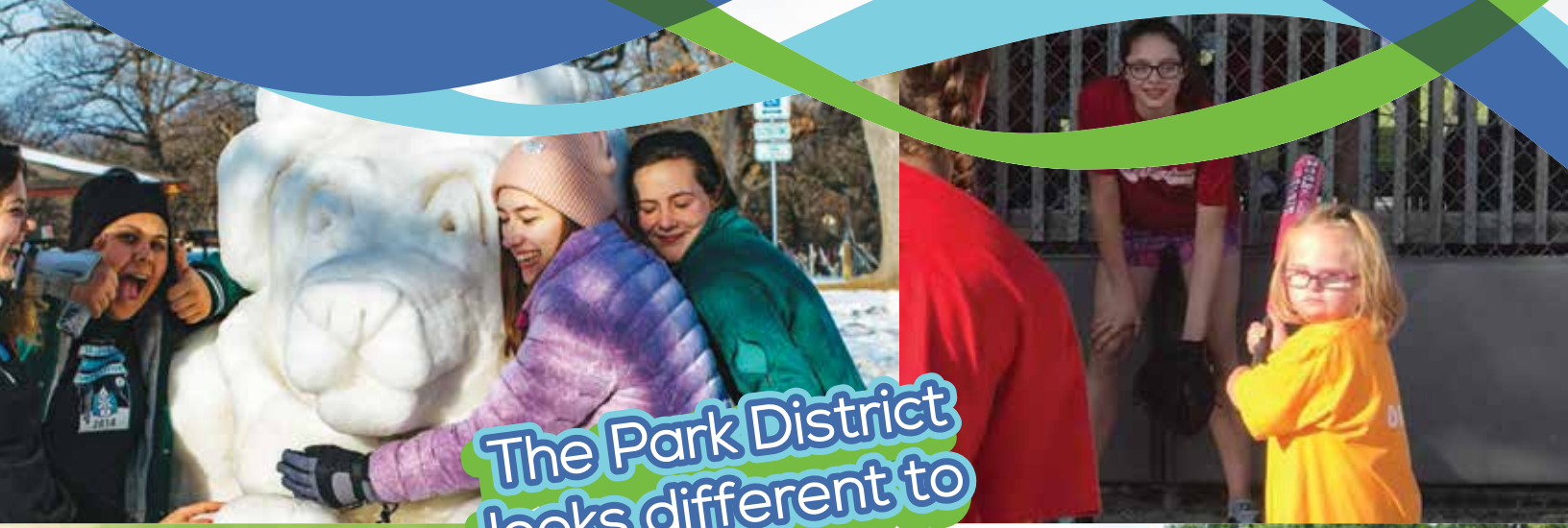


VISION • MISSION • QUALITY OF LIFE

FUNDamentals

2018 EDITION – 2017 ANNUAL REPORT



The Park District
looks different to
Everyone



2018

Inside this issue:

- MEET AMJED ALSADUN JR.
- YOUR ROCKFORD PARK DISTRICT
- HOW YOU CAN MAKE A DIFFERENCE
- 2017 DONORS



ROCKFORD PARK DISTRICT
F O U N D A T I O N

★ How the Park District looks ★ to Amjed Alsadun Jr.

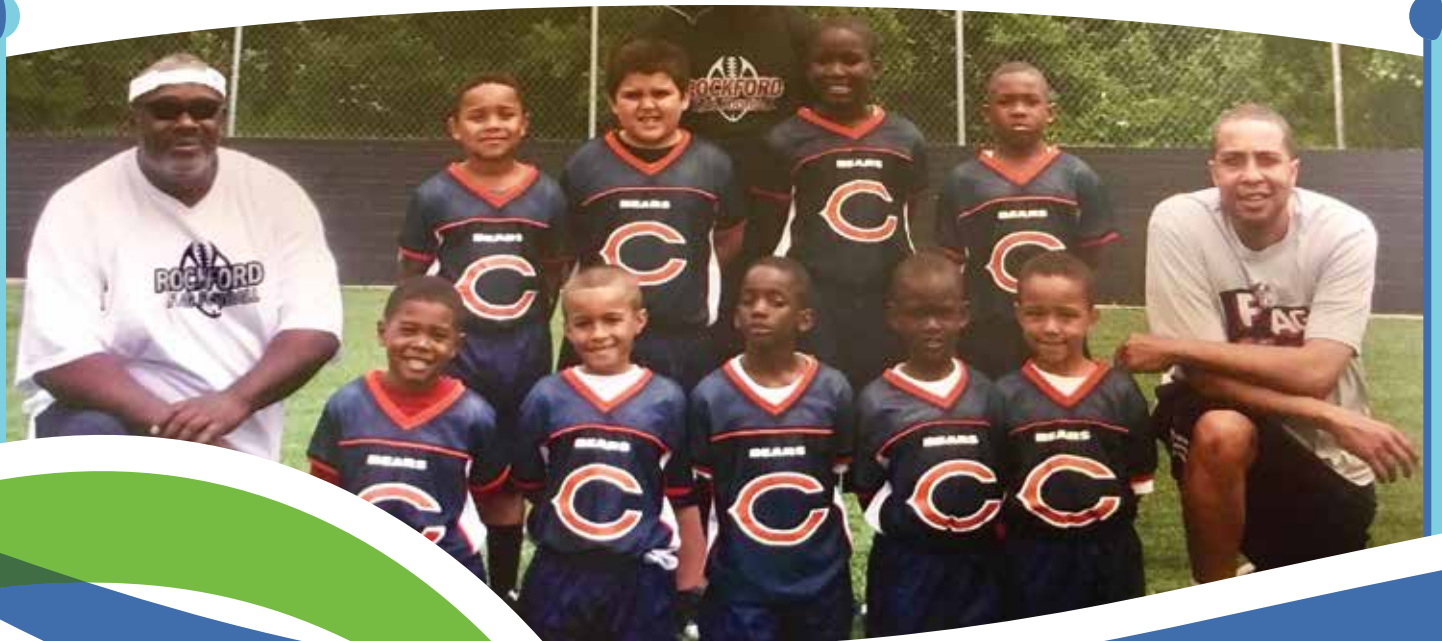
Meet 9-year-old Amjed Alsadun Jr.; he has attended Washington Park Community Center programs since he was five years old, along with his older brother. Amjed plays basketball, flag football, and is part of the summer camp and after school program. His mother Tiffany said, "it's a positive place for my boys to go, and I know they are safe." Amjed says his favorite thing to do right now is swing with his friends, "there were no swings for a long time."

No matter which Park District program is being offered to citizens, the Rockford Park District gives kids the opportunity they would otherwise not have. Without the help of donations, many children would not be able to enjoy field trips, lessons, and camps.

Tiffany said, "The staff not only makes sure the kids are having fun, they are continuously learning skills."

Levin Faust, founder of the Rockford Park District in 1909, had a vision for families in Rockford. He dreamed of living in a community where residents enjoyed places of beauty. "After a long week toiling in the shop, a working family should be able to spend their free time in the green grass under the shadow of trees without fear of their children playing in the streets." One hundred nine years later, this is still very much the focus of the Rockford Park District.

"I look at the Rockford Park District and Washington Park Community Center as a village, and I am glad I chose them to be a part of my village," said Tiffany, Amjed's mom.





Our Donors

For 38 years, the Rockford Park District Foundation has been helping the Rockford Park District to fulfill its mission of “Helping People Enjoy Life.” Philanthropy has been a major part of the successful development of the District since its beginning 109 years ago, and continues to play a vital role. The Rockford Park District could not do what it does without the many donations from our citizens. Whether in-kind gifts, unrestricted gifts, or supporting causes that are important to the donor, the impact donors make to the Rockford Park District is priceless.

In 2017, the Foundation received \$3,281,205 in donations from 1,044 donors. Of this amount, **342 new donors** donated \$84,539, **298 re-engaged donors** donated \$195,163, and **404 retained donors** donated \$3,001,548. In addition, \$36,323 was donated through in-kind gifts such as silent auction items for the Ties & Tennies event, golf clubs for youth golf, skates for skate lessons, and material for the windmill at Lockwood Park.





Our Volunteers

Volunteers are a valuable asset to the Rockford Park District. Each volunteer has a reason for giving of their time to help. Jan Merchant has volunteered in the Human Resources department for 10 years. “For me, volunteering is an opportunity to serve where there is a need. It is important and very necessary to me as a retired citizen. It really gives one a sense of fulfillment.” Jan loves meeting new people and utilizing the skills she has developed over the years.

In 2017, a new playground at Levings Park was built in cooperation with Healing Communities, Rockford Park District police with other area law enforcement, and neighbors of the park. For one day, hundreds volunteered to create a new place for kids to play.

Below is a chart showing the value our volunteers bring to the Rockford Park District. In 2017, 4,097 volunteers saved the Rockford Park District \$558,853!

COMPARISON	VOLUNTEERS	HOURS OF SERVICE	VALUE
2013	3,307	46,070	\$387,452
2014	3,405	48,521	\$407,824
2015	3,556	53,959	\$447,233
2016	3,072	39,918.75	\$322,029
2017	4,097	62,091.75	\$558,853
INCREASE (DECREASE)	+1,024	+22,137	+236,797



A Whole New Lockwood Park!

Lockwood Park is a fully functioning 146-acre urban farm with 15 miles of multi-use trail system that desperately needed a complete “facelift!” Thanks to Rockford Sharefest volunteers, fences were rebuilt, picnic tables were restored, and walkways replaced. Buildings, shelters, and the covered bridge were painted. Even Millie the cow got a facelift.

Volunteers: 1,770

Cumulative volunteer hours: 6,610

Picnic tables rebuilt: 77

Feet of fence rebuilt: 7,500

Gallons of paint used: 650

Buildings painted: 15

Bleachers rebuilt: 2

Fiberglass cows restored: 1





Our Grants

The Rockford Park District depends largely on outside funding from grants to continue operating or complete a project. In 2017, the Park District received \$564,304 in grant funding.

- \$2,000,000:** Illinois Department of Transportation ITEP grant to replace the Jefferson Street Pedestrian Bridge
- \$200,000:** Illinois Department of Natural Resources Rec Trails grant, Atwood Park Silent Sports Trail Development, phase 1
- \$100,000:** Rockford Housing Authority - Sabrooke Park development
- \$50,000:** Blazer Foundation - multiple Therapeutic Recreation projects
- \$25,000:** Community Foundation of Northern Illinois - Rock River Recreation Path lighting replacement, phase 3
- \$10,000:** ComEd Green Region Program, Biohavens at Levings Lake
- \$5,000:** National Inclusion Project, Therapeutic Recreation support at Summer Playground Programs
- \$2,500:** Christopher and Dana Reeve Foundation, water wheelchair at Magic Waters
- \$5,000:** SwedishAmerican Foundation, Fitness is Fun program at Washington Park Community Center and Levings Lake
- \$2,500:** General Mills, homeless youth camp at Atwood
- \$1,500:** Rockford Cosmopolitan Club, Therapeutic Recreation Chance to Dance program



Biohavens at Levings Lake

Southwest Community Park Transformation

The Help Me Play program of the Rockford Park District is funded by donors to help children stay actively engaged through a variety of recreation opportunities. In 2017, a portion of Help Me Play funding helped transform Southwest Community Park into a destination for NFL Flag Football and Cheer. Four scoreboards and a much needed water irrigation system were installed to help keep the fields in shape. More than 12,250 visitors enjoyed Southwest Community Park in 2017, 365 NFL Flag football players threw the ball and kept score, and 50 NFL flag football cheerleaders performed on the sidelines.



OUR FUTURE STARTS WITH YOU

COMMUNITY IMPACT THROUGH THE ROCKFORD PARK DISTRICT

The Rockford Park District provides a vibrant park system that increases property values, stimulates economic development, decreases juvenile crime, and improves our communities' health. The Rockford Park District also protects the environment, employs thousands of area kids for the first time, and brings the community together to enjoy life.

PROPERTY VALUE

Rockford Park District is critical to increasing your property value.

Key Fact: Research shows that property values can be up to 20% higher if a home is located within 500 feet of a well maintained park. (Source: Dr. John Crompton, Texas A & M University)



Highland Park

CRIME PREVENTION

By keeping youth actively engaged through lessons, camps, and programs, Rockford Park District helps decrease juvenile crime.

Key Fact: The American Correctional Association estimates that, on average, it costs states \$240.99 per day or around \$88,000 a year for every youth in a juvenile facility. Confinement costs continue to grow. Prevention or intervention? (Source: www.justicepolicy.org)



ECONOMIC DEVELOPMENT

Rockford Park District stimulates economic development.

Key Fact: Parks and facilities can ignite redevelopment, revitalization, and investment. A vibrant park system offers a higher quality of life for prospective new home owners and businesses looking to invest in the community.



UW Health Sports Factory

HEALTH AND WELLNESS

Rockford Park District facilities and parks provide the opportunity to improve physical and mental well-being through exercise or recreation, which leads to an enhanced quality of life.

Key Fact: National health expenditures hit \$3.35 trillion in 2016, which works out to \$10,348 for every man, woman, and child. That's two times more than any other developed country. (www.cms.gov)



"What people don't understand, they don't value; what they don't value, they don't protect; what they don't protect, they lose."
OUR FUTURE STARTS WITH YOU. VISIT WWW.ROCKFORDPARKDISTRICT.ORG TO DO YOUR PART.

YOUR ROCKFORD PARK DISTRICT: PAST TO PRESENT

1900

MEET JOSEPH LEE: FATHER OF THE PLAYGROUND MOVEMENT



"Play is not a luxury but a necessity. Play for adults is recreation, the renewal of life. For children, it is growth, the gaining of life. It is not simply something that a child likes to have; it is something he must have if he is ever to grow up."

1901

MEET LEVIN FAUST: FOUNDER OF THE ROCKFORD PARK DISTRICT



Faust was a Swedish immigrant who dreamed of living in a community where residents could enjoy places of beauty.
"A working family should be able to spend their free time in the green grass under the shadow of trees without fear of their children playing in the streets."

TWO REASONS THE ROCKFORD PARK DISTRICT BEGAN:

- 1 The need for quality family time to keep the family unit together.
- 2 To keep kids (particularly young boys) out of trouble.

OUR MISSION: To help people enjoy life by providing an exceptional park and recreation system.

OUR VISION: To be the best urban park and recreation system in North America, as measured by national standards and the citizens we serve.

PRIORITY RESULTS (PR):

PR I: Park space and recreational facilities meet the recreational needs of this and succeeding generations.

PR II: Residents value and are involved in diverse, well-supported, safe recreational activities for their health, well-being, fun, and entertainment.

PR III: Residents have exceptional parks and recreational facilities, services, and programs that reflect a high return on available resources.

RPD STATS

3rd Largest
PARK AND RECREATION
SYSTEM IN ILLINOIS



3-Time Winner
NAMED BEST IN THE NATION

9,534,951
USER VISITS
IN 2017



22,058
TREES



179
PARKS AND
FACILITIES

4,962
TOTAL PARK ACREAGE
DISTRICT MAINTAINS



85
PARKS



56.13
MILES OF
TRAILS



84
PLAYGROUNDS



IT'S MORE THAN JUST PARKS AND RECREATION!

The Rockford Park District improves the quality of life for citizens by providing a vibrant park system that increases property values, stimulates economic development, decreases juvenile crime, and improves our communities' health. The Rockford Park District also protects the environment, employs thousands of area kids for the first time, and brings the community together to enjoy life.



DID YOU KNOW?

UW Health Sports Factory and Mercyhealth Sportscore Complexes help bring \$20 million in economic impact to the community.



600

YOUTH GET THEIR FIRST JOB EXPERIENCE EVERY SUMMER AT THE ROCKFORD PARK DISTRICT



LIFE IN THE ROCKFORD PARK DISTRICT

The Rockford Park District provides a wide variety of facilities, recreational opportunities, and partnership support for our community, including:

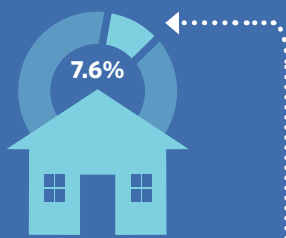
- Aquatic Facilities
- Dog Parks
- Golf Courses
- Indoor Recreational Facilities
- Neighborhood Parks
- Open Space and Gardens
- Outdoor Recreation
- Playgrounds
- Recreational Programs
- Sports Facilities
- Therapeutic Recreation
- Tournaments and Leagues
- Trails and Paths
- Youth Camps
- Museums
- Free community events such as Music in the Park and the Illinois Snow Sculpting Competition
- Partnerships with organizations such as NAACP, community centers, YMCA, and Rockford Sharefest

FINANCIAL FACTS

Tax Rate: \$1.1544 (2016) to \$1.1371 per \$100 assessed value (2017)

RPD Taxes on \$100,000 home: **\$379** (2017)

Two Main Revenue Streams: Property Taxes and Fees



About 7.6% of a Rockford resident's total tax bill is attributed to the Rockford Park District.

169
FULL-TIME
TEAM MEMBERS

1,441
SEASONAL
TEAM MEMBERS

DID YOU KNOW?

Research shows that property values can be up to 20% higher if a home is located within 500 feet of a well maintained park. (Source: Dr. John Crompton, Texas A & M University).





How you can *Make a Difference*

Playgrounds

The playgrounds within the Rockford Park District are places where children grow physically and socially, and develop creativity and imagination. The Rockford Park District maintains 86 playgrounds within neighborhood parks. As of 2018, Rockford Park District has 62 playgrounds beyond the industry standard of 15- to 20-year useful life, with an additional six playgrounds moving into this category by 2021. The cost to renovate these playgrounds is significant. Renovation costs vary depending upon the site and the amenities.

The goal for the Rockford Park District Foundation is to raise \$250,000 to build a playground each year.



Reforest the Forest City

The Emerald Ash Borer and Mother Nature have jeopardized the “Forest City.” The Park District has lost thousands of trees in the last several years, which translates to hundreds of thousands of dollars per year. There are still 2,000 ash trees that need to be removed; the cost to remove each tree is \$350.

The Foundation’s goal is to plant 200 trees per year in parks and golf courses where the trees have been removed. By donating \$25 or more, donors will be invited to the Community Tree Planting Day, and help plant the trees in the fall and spring, beginning in the fall of 2018

As the trees that are planted grow, they will help beautify our city, provide oxygen, improve air quality, conserve water, preserve soil, and support wildlife.

Together, we can have a positive lasting impact in our community. Care for, conserve, and enrich the planet one tree at a time.

Thank you to Fleet Feet Sports for your commitment to the Forest City!

Did you know that in 1853, Rockford was given the name “the Forest City” in a New York Tribune article?





Help Me Play!

Each year, more than 30,000 kids participate in Rockford Park District programs. Last year, 900 families relied on the Help Me Play fund for their children to participate. We know how important it is for our youth to have access to a wide variety of recreational opportunities to develop crucial life skills. By keeping youth actively engaged through lessons, camps, and programs, the Rockford Park District helps decrease juvenile crime! The American Correctional Association estimates that it costs \$240 per day or \$88,000 a year to house a youth in a juvenile detention facility. Think of all that could be provided to youth in the Park District for those same dollars!

Every kid deserves the chance to play flag football, take a swim lesson, go to camp, ride a horse, learn to skate, swing a golf club, or be the next big basketball star. Help Me Play donations are used for anything that's connected to youth in the Rockford Park District, such as summer camps and playground programs, youth sports, lessons, and fee assistance. Some kids can't afford to just be a kid, but we are going to change that.

Declining tax revenue over the years has forced the Rockford Park District to cut youth programs such as Imagination Station, Camp Lone Oak, and playground programs. **A gift of \$30 will cover skating lessons, or \$35 will pay for a child's swim lessons. A \$100 donation will send a child to Saddle Up Camp at Lockwood Park for the week. Any donation will help a child play!**

Unrestricted Funds

Unrestricted funds are donations the Foundation can use for any purpose. These funds are critical to the Rockford Park District Foundation, as it allows the Foundation to allocate those funds toward the most important needs at any given time. Restricted funds are limited by the donor for a specific use. The Foundation manages more than 100 restricted funds such as: Music in the Park, Lockwood Park, Field of Honor, Jr. Chariots, Jr. IceHogs, and NFL Flag Football.



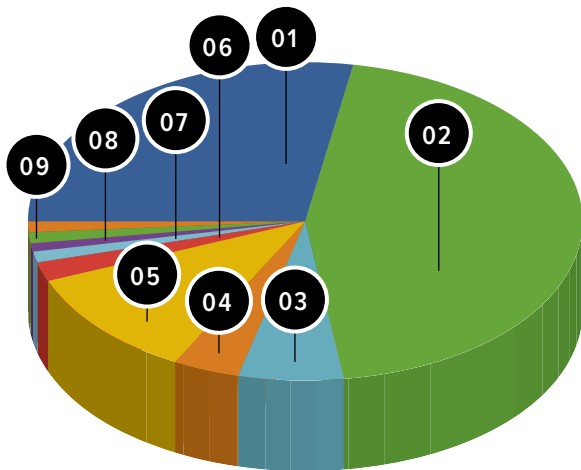
Rockford Park District Foundation Financial Report

For year ending December 31, 2017 (audited)

The Rockford Park District Foundation is operated in conjunction with and primarily for the benefit of the Rockford Park District. The Foundation receives monetary, land, and various donations on behalf of the Park District, and administers the donations to ensure the donor's intent is fulfilled.

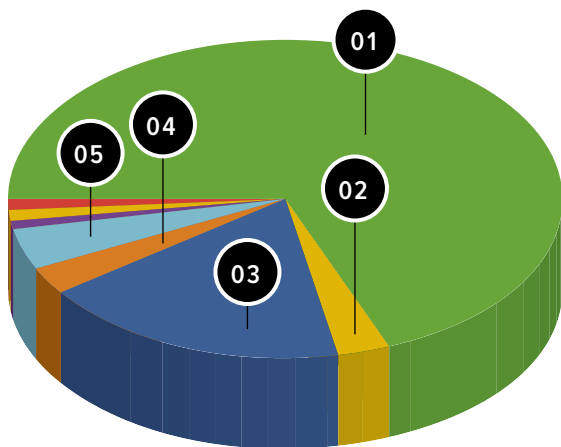
Total Revenues \$ 3,281,205

Total Expenses \$ 1,829,960



REVENUES

- 01 • Contributions **\$916,475** 28%
- 02 • Pledge Revenue **\$1,487,259** 45%
- 03 • In-Kind Donations from RPD **\$240,332** 7%
- 04 • Grants **\$123,900** 4%
- 05 • Earnings from Investments **\$347,161** 11%
- 06 • Special Events **\$61,562** 2%
- 07 • Lease Income **\$25,292** <1%
- 08 • Sponsorship Income **\$42,700** 1%
- 09 • Donated Goods **\$36,274** 1%
- NA • Miscellaneous Income **\$250** <1%



EXPENSES

- 01 • Project Expense **\$1,270,622** 69%
- 02 • Donation Expense (Land/Fixed Asset) **\$47,146** 3%
- 03 • Operating Expense **\$337,085** 18%
- 04 • Project Expense - Services **\$50,572** 3%
- 05 • Special Event Expense **\$70,596** 4%
- NA • Donated Goods Expense **\$11,908** >1%
- NA • Miscellaneous Expense **\$8,314** >1%
- NA • Bad Debt Expense **-\$33,717** 2%

Rockford Park District Financial Realities

- For the past four years, the Park District elected not to increase tax dollars for its operating budget, saving taxpayers \$1.7 million
- \$8.4 million in budget reductions to keep a balanced budget
- Since decline in Equalized Assessed Value (EAV) in 2009, Rockford Park District has lost nearly \$1 billion in EAV

2017 GIFTS TO THE ROCKFORD PARK DISTRICT FOUNDATION

Thank you to the generous individuals, corporations, and foundations that provided gifts, pledges, and memorials in support of the Rockford Park District. These gifts help bridge the gap between tax and fee revenue. Without our donors, the Rockford Park District would look entirely different!

ALDEEN GOLF CLUB

Norris and Margaret Aldeen Foundation
Rick & Lana Engen

ALPINE HILLS

Nancy N. Olson Foundation
Rockford Bank & Trust
Anonymous

ANNUAL APPEAL

Fred and Hyat Adamany
Alpha Controls & Services, LLC
Sunny An
Jack and Joyce Armstrong
Eric and Rebecca Baeverstad
Luke Bailey
Alfeo Bari
Andrew and Jeanne Bergstrom
Blake Oil Company
Ronald and Nancy Blomquist
Joshua Boomgarden
John and Anna Borchers
Bove's Auto & Truck Service
Denise Boxleitner
Ms. Marva Brown
Joseph Bruscato
Robert Buchanan
Vint and Susan Buckwalter
William A Byers
Andra and Ignacio Camacho
Edwin Carlson, III
Mary Caskey
Beverly Cicolello
Cincinnati Tool Steel Company
Steven and Diane Clark
James and Connie Coffey
Donald and Dianne Collopy

Mary Conley
Richard Conner and Conner Family Trust
Mary Conti
John R. Cook Associates
Stephen and Janet Decori
David and Barbara Dent
Ron and Audrey Dierks
John Dotzel
Kevin Dowling
Lucille Dunphey
Gary Ecklund
Susan Ekstrom
Charles and Marjorie Elliot
Julie Elliott
Michael and Julie Elston
Ellwyn and Gayle Englof
Barbara Erickson
Lana Erxleben
Mimi Fagan
Robert Farrell
Matthew Farrey

Eugene and Barbara Ferry
Joyce L. Finkler
Ms. Catherine Flom
Evelyn Freeman
James and Marylou Gault
Georgalee George
Laina Gerace
James and Mary Gesmer
Stuart and Monica Glenny
Sandra Goetz
Terrence Gooden
Patricia Green
Al Guerrero
Larry and Judy Gunderson
Brian Gustafson
James and Andrea Gustafson
Charlotte Hackin
Joseph and Rhonda Hanley
Mike and Donna Hayes
Kenneth and Diane Held

Mr. Jorge Herrera
Mary Lynn Hicks
Robert Holdmann
Stacey Hooper
Ms. Anita C. Horst
John and Robin Hovis
Janette Howard
Wray and Suzanne Howard
Brian and Megan Huels
Dr. Karl Jacobs
Scott and Cindy Jensen
Russ and Gin Johansson
Elinor Johne-Nelson
Ms. Caroline J. Johnson
Cynthia Johnson
Eugene Johnson
Marlene Johnson
Penny Johnson
Nancy Kauzlarich

Ruth Ann Kearney
Chuck Kenison
Kjellstrom Family Fund
Vickie Klang
Sue Kluck
Arthur and Frances Kneller
Barbara Kober
Loyd and Diane Koch
Mary Lou Lafler
Conrad and Linda Lantz
Mr. Andrew Larsen
Judith Larson
Mr. Ronald L. Leek
Richard Leighton
Lello Family Foundation
Kenneth Lester
Susan Lewandowski
Erik and Susan Lewinski
Sven Lindgren
Dick and Dixie Lindsey
Richard Lippert
Mark Long
Mark and Nancee Long
Peter and Pamela Lonsway
Jerry Lopotowski
Roger and Nancy Lundstrom
M.B.S. Identification, Inc.
Kent and Marti Mallquist
Karol and Michael Manley
Thomas Markuson
Coleman and Camille Mayes, Sr.
Mark and Linda McDonald
Brian and Susan Melcher
Ms. Maria Mendia
Ellsworth and Jean Milway
Terry and Betty Moore
Steven and Patricia Morig

N.I.T.E. Equipment, Inc.
Kay Nelson Cull
Keith Nelson
Jeff and Martha Nielsen
Denise Noble
Roger and Barbara Oehlke
Denise Oliver
Mr. Roger Olson
Bryan and Kimberly Orvis
Marlene Park
Raymond Parks
James and Lucy Pirages
James Ponds and Mary Denton-Ponds
Rosemary Prewett
Jim and Mary Reid
Robert and Tawny Reitsch
Sara Reynolds
William and Karen Richards
Rock River Enterprises & Barge, Inc.
Robert Rode
Carole J. Rose
Lillie Rude
John Rudie
Joan Sage
Robert and Ilona Satterlee
Helen Smith
Clinton and Paige Snedegar
William and Julianne Snively
Fred Speer
William and Karen Starr
Melanie Story
Marian Strand
Thomas and Mary Supel
James and Cathie Szymanski

[Continued on page 16]



John Taylor
Robert and Norma Trojan
Hazen and Carol Tuck
Sally van Uden
Robert and Mary Vigna
Nancy R. Vogel
Thomas Walsh
Bill and Judith Wilhelmi
Daniel Young
Alan Zais

Mike Feller
Charles Fry
Jason Gautier
Ryan and Jordan Held
J.E.M. Painting Co.
Jim and Pam Keeling
Tonya Meyer
Layne Nelson and Lori Berkes-Nelson
Rick Nelson

Michael F. Blessing
Shannon Connors
Danielle Costello
Suzanne Hulten
José and Kellie Olivencia
Russell and Jacqueline Peterson
Vernon Peterson
Douglas and Robin Roegner
Becky Stokes-Lambert

Animal Medical Clinics of Rockford
Anonymous
Aqua-Aerobic Systems
Jack and Joyce Armstrong
Paul and Teri Baits
Richard H. and Sally Baker
Jim and Helen Barrett
Dr. William Baskin and Leah Baskin
Richard and Sue Becker

Council of Rockford Gardeners
Delia Dennis
David and Sara Deutsch
Dr. John Dorsey and Sue Hessian
Elizabeth Dougherty
Gary Ecklund
Edwards Apple Orchard, Inc.
Georganne Eggers
Ellen Erkert
Nancy L. Esterl
Brenda Falconer
Randy and Patricia Farney
Eugene and Barbara Ferry
Priscilla Flynn-Heath
Nancy Follmar
Evelyn Freeman
Tom and Darlene Furst
Gary W. Anderson & Associates, Inc. Architects
Laina Gerace
Dr. William Gorski
Sue Grans
Clifford and Joan Gray
Virginia Gregory
Robert and Marion Guirl
James and Andrea Gustafson
Ron and Juli Gustafson
Ronald and Deborah Gustafson
Robert and Nadine Hallstrom
Pat Hanks
Elaine Harrington
Heinzeroth Marketing
John and Kathryn Heisel
Sue Hessian
Mary Lynn Hicks
Luther and Janet Hill
David and Karen Holmertz
John and Robin Hovis
HR Concepts, Inc.
Brian and Megan Huels
Mark and Ingrid Jansen
Russ and Gin Johansson
Elinor John-Nelson
Timothy and Janet Keating
Keeling/Green Pass Thru Fund
Sandra Kelly
James and Gloria Knoll
Dr. William Kobler

Loyd and Diane Koch
Melissa Kroening
Mary Kuller
Mary Lou Lafler
Dr. and Mrs. Gordon Langejans
Judith Larson
Nancy Layng
Darryl and Judy Lindberg
Janis Long
Peter and Pamela Lonsway
Roger and Nancy Lundstrom
Nancy Lundstrom
Karol and Michael Manley
Christopher and Cecilia Mann
Mark's Tree Care, Inc.
James and Janet McMahon
Ruth Miller
Stephen and Janet Moore
Barbara More
Thomas G Murray
Ms. Andrea Nelson
Scott and Sue Nicholas
NW HomeStart
Betty O'Neal
Denise and Robert Oliver
Bruce and Paula Olson
Ms. Alice Pampe
Catherine Pang
Rex and Carol Parker
Raymond and Jo Marie Paul
Delbert and Lois Peterson
Vicki Pfeilschifter
Richard Pollack
Charles Prorok and Marcia Mueller
Sally Pulford
Jean Reese
Jane Reuber
Sara Reynolds
William and Karen Richards
Gary and Pamela Jean Riemer
Dr. Gary Rifkin
Rock River Service Company
Rockford Area Gardeners of America
Bruce Ross-Shannon and Ruthe Falk



Scott and Betsy Zimmerman

ATWOOD SILENT SPORTS TRAIL

Joe Alligood and Liz Baumgardt
Anonymous
Michael Aramovich
Jack and Joyce Armstrong
Atwood Foundation
Bob Bier
Michael and Nancy Boyer
Tom and Susan Busse
Don Chritz
Nathin Davisson
John Dempsey
Mr. Todd Enneking
John Erb

Olson Funeral Chapels, Inc.
Rock River Multisport NFP
Jaime Salgado

Robb and Theresa Sinks
Becky Stokes-Lambert
Supply Core Inc.
Kevin Swan and Laurie Anderson
Vettesupply.com LLC
Wal-Mart Foundation
Barbara Williams

ATWOOD OUTDOOR EDUCATION CENTER

Dean Adolphson and Marlyn Gustafson
Anonymous
Atwood Foundation
Brent and Susie Bernardi

ATWOOD OUTDOOR EDUCATION CENTER - SCHOLARSHIP

Dr. Karl Jacobs

BE SOCIAL ADULT PROGRAM

Blazer Foundation of Rockford

BUDDY BASEBALL

Anonymous
Blazer Foundation of Rockford
Rockford Christian

BUEHLER HOCKEY

Bill and Lorraine Buehler

CANINE CORNERS

Anonymous
Olympic Tavern

CELEBRATE LIFE

Jim and Helen Barrett
Timothy F. Butler

CITY OF GARDENS

Jean Abruzzo
Larry L. and Marsha M. Ackerman

Dr. and Mrs. Jeffrey Behr

Kurt and Sarah Bell
Carlo and Josephine Benassi

Mary V. Bergstrom

Robert and Lois Bertolasi
Marge Bevers

Mr. Don Bissell

Norma L. Bleed
John and Anna Borchers
William A Byers
James and Barbara Campbell

Capri Restaurant
Jeffrey and Linda Carlson

Gerald and Ann C. Caton
Raymond and Shawn Choinard

Churchill Grove Inc.
Dorothy Cieskus

Comcast - The Comcast Foundation

Mary Conley
John R. Cook Associates

Claire Rotolo
 Attorney Sherri Rudy, PC
 James and Jennifer Sacia
 Scandrol Construction Co.
 John and Ervina Scheub
 G. Michael Scheurich
 Dr. Milton and Judith Schmitt, Jr.
 Lee and Charmaine Schreiner
 Michael and Julie Shalbrack
 Aaron J. and Peggy W. Shiels
 Mary Lib Skerkoske
 Joan Stonecipher
 Bradley Stott and Christine Stoff
 Dan and Susan Swift
 James and Cathie Szymanski
 Cathie and Bill Thiede
 Daniel and Kristin Tussing
 Deborah Vidican
 Walter B. and Virginia S. Watson
 Greg and Lulu Watt
 Karen and John Weedman
 Douglas and Diane Wilson
 Mr. Henry Wilson
 Woodfire Pizza
 Woodman's Markets

Betty Zimmerman

DISC GOLF

River City Sound
 Alize's Grill
 Amazing Arts
 Eldridge Roofing
 Fitzgerald Equipment Company, Inc.
 Jump 4 Joy
 Rockford D.O.L.L.S
 The Tree Amigos
 Denise Westphal

ELLIOT GOLF COURSE FUND

Wesley and Judith Englund

FIELD OF HONOR

Sundstrand Friday Lunch Group

FIRE TRACK AND FIELD

AdkinsTrak Timing

Associates
 Anonymous
 Glenn Norwood
 PMI Photography Inc.
 Precision Construction Services

FORE THE KIDS GOLF PLAY DAY

Mr. Dave Adkins
 Anonymous
 Associated Bank
 Jason Augsburg
 Jeffrey Beto
 Bischoff Dentistry LTD
 David D. Casalena
 Chartwell Agency
 Steve and Jeanine Elsberg
 Dana and Rebecca Epperson
 Angelo and Janice Fiorello

Mr. and Mrs. Larry Friel
 Thomas and Kathy Geissler
 Graystone Grill
 David and Jan Honkamp
 Howe Freightways Inc.
 Jim and Pam Keeling

Kelley Williamson Company
 Keystone Insurance Agency, Inc.

Derek Kiley
 Marilyn and David Kloepfer
 Johnathan Kuss
 LaMonica Beverages, Inc.
 John and Christine Larson
 Mr. Dave Lindstrom
 Ryan Monette
 Park Lanes, Inc.

Christopher and Megan Perry
 Prairie Street Brewing Company
 Gary and Kimberly Randles
 Rockford Ball Screw Company
 Rockford Toolcraft, Inc.
 RSM US LLP
 Sjostrom & Sons Inc
 SupplyCore Inc.

FRIENDS OF FIGURE SKATING AT CARLSON ICE ARENA

Anonymous
 Brent and Sharon Brodeski
 Environmental Solutions, Inc.

FRIENDS OF LOCKWOOD

Anonymous
 DM Moore Marketing Corporation

Pepsi-Cola Bottling Company
 Judy Roby
FRIENDS OF SKI BRONCS
 Jean Augensen
 David Bowers
 Jeff and Linda Carlson
 William and Alanna Conard
 Drew Hess

Patricia Insko
 Jeff and Susan Ippolito
 Scott and Monica James
 Wayne Jones
 Ms. Diane Tegland
 Edward Tegland
 Gregg and Lynette Wilson

GOLF BALL DROP

Advanced Business Machines
 Anonymous
 Matthew D Armstrong
 Cale Barrick
 John Beck and Sandra Rivera-Beck
 Robert Beck
 Angela Bergman
 Deana Bingham
 W. Walter Boothe
 Burr Pest Control

Mr. David D. Casalena
 Chartwell Agency
 Sharon Choppie
 Ms. Linda Dunn
 Mr. Mike Dunn
 Chuck Elliot
 Steve and Jeanine Elsberg

Mr. and Mrs. Steven Elsberg
 Nicole Engelbart
 Curtis Ennenga
 Dana and Rebecca Epperson
 Stephen and Lynn Ernst
 Jacob and Jacolyn Reppen Fitzgerald
 John T Fitzsimmons

Laura Garey
 Mr. Joseph Geraghty
 Richard and Joyce Gibbons
 Stuart and Monica Glenny
 Pat Hanks
 Mike and Donna Hayes
 Valerie Johnson
 Ned Junor

Agnes Kirkpatrick
 Chris and Nicole Kovarik
 Jack Kubitz
 Bob and Pat Lamb

Mr. and Mrs. Clinton Lamb
 Brian Lindsay
 Jeffrey A. and Pamela Lindstrom
 Stephen C Lizer
 Marty Gras Slots LLC

Mr. and Mrs. Gary Marzorati
 William McManua
 William J McManus
 Richard W McVinnie
 Layne Nelson and Lori Berkes-Nelson

Denise Noble
 Stacy Paris
 Brian Peck
 Norma Polcek
 Michael Rathbun
 Mike and Sandy Robinson

Rockford Area Convention & Visitors Bureau
 Rockford Ball Screw Company
 Dena Sanford
 Senator Dave Syverson Campaign Committee

Ms. Mary Ann Smith
 Richard Snyder

[Continued on page 18]



Spee Dee Courier Service, Inc.

David Wiemer

Rhonda Young

Alan Zais

GOLF OUTREACH - FORMERLY 1ST TEE

Anonymous

Michael Bainter

David Beto

Jeffrey Beto

Burr Pest Control

Michael and Lynn Coyle

Steve and Jeanine Elsberg

Frank and Carol Foster

Graystone Grill

Hinshaw & Culbertson

Cyndi Hlavin

Mr. and Mrs. Jeffrey Hoskins

Jami Hoskins

Tom and Sue Humphris

Kelley Williamson Company

Marilyn and David Kloepfer

Jon and Tina Leinbaugh

Jeffrey A. and Pamela Lindstrom

Dr. Randall Oman and Dr. Mariene Oman

Jay Pyzynski

Gary and Kimberly Randles

Robert Reitsch

Rock Jensen Foundation

Rockford Pro-Am Inc.

Matthew and Karla Schindler

SCNS Inc.

Mary Beth Shaw

Clinton Snedegar

Dan Spencer

David and Katie Stachowiak

The Ben Harding Family Foundation

Ronald and Kathleen Wright

HARKINS COMMUNITY FUND

April Adams

David Adolphson

Alpine Bank

Alpine Beef-A-Roo, Inc.

Anonymous

Cindy Bacher

Donna Badham

Diane Benjamin

Marilyn Board

Brad and Michelle Bowman

Ms. Dawn R. Brown

Ms. Marva Brown

Ms. Treva Brown

Rodney and Sandra Cain

Choice Furniture Inc.

City of Loves Park

Marianna and Stephen Cooper

Corina Curry

Creig and Elizabeth Day

DM Moore Marketing Corporation

Tamiaka Duboise

Char Edwards

Paul Gaier

Su Gilbert

Janet Hacking

Elaine Hardt

Heartland Community Church

Mrs. Arles Hendershott-Love

Vernita Hervey

Arlene Hill

Annie Hobson

Veretta Jack

Brian and Karen Johnson

Alfred and Margie Johnson

Alberta Jones

Greg Jury

Greg and Kelly Jury

Katherine Kidd

Nancy Kirk

Carol Kuntzelman

Kim Renee Lape

Timothy Leatherby

John Linde

Mr. Joseph Love

Karen McDaniel

Reni Mitchell

Hannah Muther

Layne Nelson and Lori Berkes-Nelson

Audrey Nelson

Ebony Nelson

Shirley Nelson

James Ponds and Mary Denton-Ponds

Michelle Quast

Rockford Park District

Karen Schiller

Estella Smith

Ruby Smith

Hosea and Shirley Stanford

Brad and Jessica Steinberg

Transform Rockford

Tyler's Landscaping Service, Inc.

Rhashonda Williams

Woodward

YMCA

David L. Zierke

HELP ME PLAY

Wendy Adams

Adam and Mariah Anast

Anonymous

Kyle Bevers

Martasha Brown

Tom and Kaela Churchill

Dennis and Margaret DeMoss

Tim and Deb Dimke

Kathleen Forbes

Charlie Fry

Darren and Lori Gassaway

Dr. Daniel and Catherine Herdeman

Tom and Jeannie Hill

Kuenzi Dearth-Horwich and Chad Horwich

Illinois Bank & Trust

Jeffrey and Ann Marie Jinkins

Shelley Marchione

Market Strategies

Derek Papich

Danielle Potter

David and Paula Reiter

Jay and Liz Sandine

Jeff & Shelley Shinn Foundation

Mark Smith and Brenda Stubblefield Smith

David R. and Jennifer Spencer

Karounna and Watsana Thiravong

ICE FACILITIES

Illinois Bank & Trust

SupplyCore Inc.

INGERSOLL GOLF COURSE

Anonymous

JUNIOR CHARIOTS

Community Foundation of Northern Illinois

Try Beta Foundation

JUNIOR ICEHOGS

Anonymous

Elite Photography

Generations Dental

Ink Cannon Inc

Robert Kartheiser

Meirtran, Inc.

Rockford Icemen Hockey Club Inc.

Steel Fabricating, Inc.

KIWANIS OF ROCKFORD - EXPLORATION STATION

Kiwanis Club of Rockford

Chris and Nicole Kovarik

ECLIPSE LAGOON BRICKS

Arlen Aumann

Michael Bienemann

Melinda Bonte

Corona John Ericsson Group

Jim Dawson

Betty Duhigg

East High School Class of 1957

Carol A. Eggleston

Terri Ekberg

Ms. Barbara L. Engstrom

Judith Fair



Helen Foster
 Fringe
 Steven Gangler
 Melanie Haas
 Lisa Hathaway
 Ms. Yvonne Holdeman
 Don James and Nancy Adams
 Quincy Jenkins
 Kayla Martz
 Josephine Mioni
 Jerry and Kathy Myers
 Rockford Summer Swim Conference
 Whitney Scott
 Marilyn Shigley
 Pamela Shipley
 Steve Staman
 Larry and Ann Stegall
 Peggy Stegall
 Vanessa Sweet
 Mary Jane Thielemann
 Mark West
 Mr. and Mrs. Daniel Weyrauch
 Charles and Candice Williams
 Frank B. Williams

LEGACY YOUTH ENDOWMENT

Mike and Veronica Costello
 Fred and Amy Ekberg
 Kuenzi Dearth-Horwich and Chad Horwich

Deary and Kimberly Lawson
 Kimberly Lawson
 Tom Lind
 Zack and Amy McIntyre
 Derek Papich

LEVINGS LAKE

Dr. Robert and Cheryl Jarrett
 Perks Family Foundation
 Winnebago County

LEVINGS LAKERS

Illinois Legislative Sportsman's Caucus
 Senator David Syverson

LITTLE BLACKHAWKS

Chicago Blackhawk Hockey Team, Inc.

LIVE AT LEVINGS

Winnebago County

LOCKWOOD PARK

Lockwood Trust
 Mark's Tree Care, Inc.
 Kevin Swan and Laurie Anderson

Jim and Helen Barrett
 John Beck
 Elizabeth Dickinson
 Harriett Dudley
 Fred and Jeanne Fauerbach
 Robert and Bonita Gosdick

NEW DOG PARK AT CHURCHILL PARK

The Canine Crunchery
NFL FLAG FOOTBALL
 Anonymous
 Amy Byrd

Nicholas Family Foundation
 Sally Pullford
 Winnebago County
PERRYVILLE PATH
 Ronald and Deborah Gustafson



LPGA

Jon and Tina Leinbaugh
 Jeffrey A. and Pamela Lindstrom
 LPGA Foundation
 LPGA-USGA Girl's Golf
 Karounna and Watsana Thiravong

MAINTENANCE

James Collins

MIDWAY VILLAGE PRARIE RESTORATION

Illinois Clean Energy Community Foundation

MUSIC IN THE PARK

Advanced Machine & Engineering
 Anonymous

Donald S. Holt
 Curt Johnsen
 Richard and Nancy Kunnert
 Tom and Patricia Lippert
 Silvio and Karen Massetti
 Daniel L. McCullough
 Robert and Dorien Peterson
 Bruce Samuelson
 Charles and Stella Schroeder
 Jeff & Shelley Shinn Foundation
 Mary Lib Skerkoske
 Fred Speer
 Gregory and Anne Taylor

Chicago Bears Football Club, Inc.
 Precision Construction Services
 Southwest Ideas for Today & Tomorrow
 Pierre Walker
 Winnebago County
 Woodward
NICHOLAS CONSERVATORY & GARDENS
 Lisa Ann Alexander
 Artale Wine Co.
 Jean Castle
 Erik Ipsen
 Kjellstrom Family Fund
 R. Mark and Lisa Lindman

Keeling Puri Peace Plaza Endowment Fund
 Joanne Lewis
 Rockford Education Association
 Anne Sibley O'Brien

PLAYGROUNDS

Jeff & Shelley Shinn Foundation

RIVERVIEW MUSEUM BOAT DOCK

Specialty Screw Corporation

ROCKFORD BANK & TRUST PAVILION AT ALDEEN GOLF CLUB

Rick and Lana Engen

SANDY HOLLOW GOLF COURSE

Wesley and Judith Englund

Dennis McLaughlin
 NyCLO Screw Machine Products, Inc.
SENATOR STADELMAN'S HOOPSTARS
 Com Ed
 Comcast
 Drive Right School of Driving
SINNISSIPPI ROSE & PERENNIAL GARDEN

Steven and Penny Christians
 Dan and Denise Delanty
 Andy and Karen Dylak
 Dan and Debbie Erwin
 Kerry Glavin

Layne Nelson and Lori Berkes-Nelson
 Dena Sanford
 Jeff & Shelley Shinn Foundation

John and Kathryn Torrence
 Mark and Melissa West

SNOW SCULPTING

Advanced Machine & Engineering
 Community Foundation of Northern Illinois

José and Kellie Olivencia

SUMMER CAMP

Sundstrand Steak Club

TEEN CAMP

Blazer Foundation of Rockford

THERAPEUTIC REC PROGRAMS

Anonymous
 Deana and Steve Bingham
 Christopher & Dana Reeve Foundation

National Inclusion Project Inc.

SwedishAmerican Health System

TIES & TENNIS

Lisa Ann Alexander
 Alpha Controls & Services, LLC
 Chad and Sara Anderson
 Anderson Japanese Gardens
 Sara Anderson
 Anonymous

Arc Design Resources, Inc.
 Jack and Joyce Armstrong
 Jane Austin
 Lydia Bainter
 Lori Berkes-Nelson
 Brent and Susie Bernardi
 Deana and Steve Bingham
 Denise Black
 Chip Block
 BMO Harris Bank
 Chris and Erin Brady
 Elaine Bruckner
 Vint and Susan Buckwalter
 Chartwell Agency
 Steven and Penny Christians
 Todd Collins
 Comcast
 Chris Cooling
 Cooling Land Concepts
 Doug Curry
 Denise Delanty
 Tim and Deb Dimke
 Tim and Sandy Dingus
 Karen Dylak
 Rick and Lana Engen
 Dana and Rebecca Epperson
 Dana Epperson
 Mike Fleming
 Ms. Lori Frith
 Gino Galluzzo
 Stuart and Monica Glenn
 Gorman & Company
 Gary Gorman
 Elizabeth Grace
 Tom and Shelly Green
 Pat Green
 Virginia Gregory
 Robert and Marion Guirl
 Mr. Clayton Guler
 Gwyn Gulley
 Guyer & Enichen, P.C.
 David Hagney
 Portia Hanebuth
 James and Julie Hansberry
 Emily Hartzog
 Ryan Hathaway

Andrew Hendrickson
 Taylor Hennelly
 Jarrod Hennis
 Mr. Jorge Herrera
 Tom Hilbert
 Mick Hockinson
 Sona Hoglund
 Larry and Julie Holen
 HR Concepts, Inc.
 Ernie Hunter
 Illinois Bank & Trust
 Interactive Entertainment Group
 Stephanie Jacobs
 Dr. Robert and Cheryl Jarrett
 Bret Jenkins
 Jennifer Johnson
 Jennifer Jones
 Nancy Kauzlarich
 Jim and Pam Keeling
 Mr. Dan Kennedy
 Curt Kleckler
 Kent Kohlbacher
 Mary Lou Lafler
 Elizabeth Lazdins
 Darryl and Judy Lindberg
 Pamela Lindstrom
 Ian and Amy Linnabary
 Vincent and Stephanie Lombardi
 Brian Long
 Catherine Martin
 Michelle Masters
 Tim McCarty
 Lori A. McEntee
 Mr. Thomas McNamara
 Meridian
 Layne Nelson and Lori Berkes-Nelson
 Keith and Connie Nelson
 Nicolosi & Associates, LLC
 Webbs and Mary Norman
 Dan and Jodi O'Boyle
 Jodi O'Boyle
 Geoff Oman
 OSF Saint Anthony Medical Center
 Clinton and Amy Ott

Rex and Carol Parker
 John and Julie Perino
 Pioneer Real Estate Services
 James and Lucy Pirages
 James Poluyanskis
 Chris Reese
 Rewerts Design Group
 Nate and Maryjo Reynolds
 Kelli Ritschel Boehle
 RK Dixon
 Carol Roberts
 Rock Valley Glass of Rockford, Inc.
 Rockford Area Convention & Visitors Bureau
 Rockford Bank & Trust
 Rockford Chamber of Commerce
 Rockford Consulting & Brokerage, Inc.
 Rockford Park District
 Rockford Public Schools
 Jim Rodriguez
 Syeda Roshan
 Jaime Salgado
 Jay and Liz Sandine
 G. Michael Scheurich
 Dennis Schumacher
 Robb Sinks
 Brenda Stubblefield Smith
 David R. and Jennifer Spencer
 Dan Spera
 Mr. Steve Stadelman and Mrs. Patricia A. Papson-Stadelman
 Brad and Jessica Steinberg
 Stenstrom Companies
 Becky Stokes-Lambert
 Sundstrand Aerospace Corporation
 Kevin Swan and Laurie Anderson
 SwedishAmerican Health System
 Senator David Syverson
 Cathie and Bill Thiede
 Dale Thomas
 John and Kathryn Torrence
 Hazen and Carol Tuck
 United Technologies Matching Gift
 Jeff Welch

Maurice West
 Williams-Manny
 YMCA
 Bradley and Julia Zimmerman
TRANSFORM TENNIS
 Brent and Susie Bernardi
 Rex and Carol Parker
 Kevin Swan and Laurie Anderson
TREE REPLACEMENT
 Jeff & Shelley Shinn Foundation
UNRESTRICTED
 Steve and Connie Ainsworth
 Anonymous
 John Beck
 Brett Benning
 Blazer Foundation of Rockford
 Vint and Susan Buckwalter
 Nicole Cabe
 Letty Camarillo
 James and Susan Cichock

Dennis and Margaret DeMoss
 Karen Dylak
 Laura Gibbs-Green
 Goodshop
 Mick and Diane Hockinson
 Jon and Tonya Johann
 Jennifer Johnson
 Thomas and Karin Kellogg
 Tom and Karin Kellogg
 Marianne Larson
 Anthony Mash
 Eugene and Rita Miller
 Kellie Olivencia
 Derek Papich
 Leopold Roganowicz
 Carl and Lisa Stahl
 Friends of the Rockford Park District
 Andrew Utecht
 Ms. Karen Van Howe
 Julius and Rhashonda Williams
 Woodward

WASHINGTON PARK COMMUNITY CENTER

Heartland Community Church
 Nicole Lynch
 Truist

WEDGBURY STADIUM

Target
 U90C Management Group LLC

YOUTH BASKETBALL

PMI Photography Inc.

YOUTH GOLF

Shirley Dommers
 Terri Ekberg
 Joseph Behr & Sons, Inc.
 Toledo Screw Machine Products, Inc.
 Ronald and Kathleen Wright

YOUTH TENNIS

United States Tennis Association (USTA)



In Honor/Loving Memory and Memorial Donors

The Rockford Park District Foundation gratefully acknowledges the following honorarium and memorial gifts received January 1, 2017 through December 31, 2017. To make a honorarium or memorial gift, please contact Lisa Alexander at lisaalexander@rockfordparkdistrict.org or 815-987-1632

In honor of those who inspire and enrich our lives ...

Jim Keeling

- Lois Lutz

In loving memory of those we have lost ...

Richard O. Brinker

- Gloria Brinker

Lonnie Brooks

- Julie Elliott

Dennis Cash

- William and Debra Bremner
- Bill and Tracey Buckler
- Mr. and Mrs. George Caras
- Joseph and Paula Cascio
- Angie Cash
- Bonnie Cash
- Michael Castiglioni
- Alice Cebas
- Lavern and Elaine Golackson
- Barbara Graham
- Robert and Conne Grod
- Mrs. Joanne Heckinger
- Joe Hemlock
- Dr. and Mrs. Bill Hutt
- Julianne Keeley
- Mr. and Mrs. Peter Keffer
- Paul and Heather Klebs
- Barry and Diana Kramer

- William and Susan Kueking
- Rick and Paula Lind
- Kim Lowman Vollmer
- Michael and Jean Manson
- Mary Ellen Nash
- Robert and Jo Ann Navarro
- Andrew and Carol O'Connell
- Margaret Pfau
- Diane Roman
- Sally Seaworth
- Lee and Andrea Setter
- Michael and Amanda Smith
- Maryann Streitmatter
- Amy Swanson
- Betty Swanson
- Stu and Ruth Swanson
- Michael and Mary Kay Tapp
- Mitchell and Karen Whittington

Dave Debruler

- Beef-A-Roo Partners Charitable Fund

Kim Eichman

- Judith and Charles Eichman

Donna Ekberg

- Alan Ekberg

Jack Elston

- Anonymous
- Mildred Bridgeland
- Carl and Sharon Cacciatore
- Kevin and Stacy Clay

- Thomas and Patricia Creamer
- Randy and Sandy Dimmett
- Andrew and Retha Elston
- Judith Fuller
- Angelene Germano
- Mark and Patricia Glendenning
- Lori Gummow
- Dorothy Hand
- Sharon Humble
- Joann Johnson
- Penny Johnson
- Kirk and Mary Larson
- Michael Luna
- Barbara Medlar
- Carol Moyer
- Gloria Negus
- Mr. and Mrs. Robert Olson
- Paul and Maxine Parmentier
- Susan D. Penny Allen
- Sara Powers
- Beverly Rappa
- Gerald and Jacqueline Rudolph
- Rebekah Rudolph
- David and Susan Silvis
- Kay Silvis
- Robert and Debra Silvis
- Rodney and Lee Silvis
- David Wingle
- Bill Wright

Jerry Erxleben

- Lana Erxleben

Ernest & Alice Esterl

- Nancy L. Esterl

Bernice Flickinger

- Rick and Lana Engen

Laurel Wicklund Fritz

- James and Georgeann Wicklund

Barbara Hale

- Julie Elliott

Clifford E. Johnson

- Gloria Brinker

Janet Kjellstrom

- Kent and Marti Mallquist

Brian Leaf

- Laird and Susan Lambert

Mary Dolores Lippert

- Mr. and Mrs. Robert Johnson
- Richard Lippert

Mark Lundy

- Lorel Lundy

Steve Mahan

- Leslie Mahan

Michelle Massoth

- Rick and Lana Engen

Diane Milos

- Julie Elliott

Tim Oswald

- Goon Squad

Nena Kelley-Paesani

- Julie Elliott

Ed Porter

- Julie Elliott
- Dan and Ruth Nicholas

Noah Adam Pripps

- Douglas and Julie Pripps

Warren Ramsey

- Julie Elliott

Coach Sam

- Coach Sam Memorial Fund
- Jacy Showers

Frank Schier

- Julie Elliott

Dana M. Scott

- Julie Elliott

Dr. Janusz Skwark

- Julie Elliott

David Tanner

- Chicagoland Assn of S Gaugers
- Bruce and Sheila Lorence
- State-Line 'S' Gaugers

Rolf Thienemann

- Richard H. and Sally Baker
- Gary and Sally Jouris
- Jim and Pam Keeling
- Donald and Doris Mosser
- Layne Nelson and Lori Berkes-Nelson
- Denise and Robert Oliver
- Raymond and Jo Marie Paul
- The Ben Harding Family Foundation

Helen Tucker

- James Bredeson
- Libby Clark

- Ellen Erkert
- Joan Fieldsend
- Shirley Holzwarth
- Dan and Ruth Nicholas
- Catherine Pang
- Jean Reese
- Mary Lib Skerkoske
- Steve and Susan Weiss
- Patrick and Mary Jane Winn
- Bradley and Julia Zimmerman

Eleanor Turbyville

- Accurate Accounting & Payroll Services
- American Lombardi Society Ladies Auxiliary
- John and Kay Boyd
- Julie Elliott
- Walter and Erika Kersting
- M A Murphy
- Sharon Oppgard
- Michael and Bonnie Smith
- Arlyn Vandyke
- Betty Zimmerman

Edythe Vitale

- Julie Elliott

Wanda Weimer

- David Wiemer

If you would like to contribute to any Park District project, please contact:

Lisa Alexander,
Donor Relations
Coordinator for
the Park District
Foundation

815-987-1632

or online at

rpdfoundation.org



We strive for accuracy in recognition of our donors, and apologize if any errors occurred. We ask that you call Lori Berkes-Nelson, RPD Foundation Director, with any corrections. Reach her at **815-987-1675**.

2017 IN-KIND DONATIONS

The Rockford Park District Foundation received \$240,332 in in-kind contributions of goods and services from the following generous individuals and businesses. These contributions help to further the important work of the Rockford Park District Foundation.

640 Meats	Roni Golan	Rockford Art Deli
A&T Landscaping	Granite City Food & Brewery, Ltd	Rockford Art Museum
Doug Adams	Mr. Rich Griffin	Rockford Coronado Concert Association
Lisa Ann Alexander	Gruno's Diamonds	Rockford Ornamental Iron, Inc.
Joanne Alt	Home Environment Center	Dale Sanders
AMC Theaters	Zina Horton	Shedd Aquarium
Anonymous	Jami Hoskins	Matt and Jenny Simpson
Arch Apothecary	Rockford IceHogs	Starlight Theatre
B. Jones	Marge Kantner	Swedish Soul Fusion
Bath & Body Fusion	Nancy Kauzlarich	David Tanner
Bees Knees General Store	Kegel's Bicycle Store	Tavern on Clark
Chad & Amy Bertrand	Dennis Kinnamon	Terry Temple
David Beto	Liz Kottke	Hazen Tuck
Nicole Blough	Marianne Larson	U Gotta Jump
Vint and Susan Buckwalter	Tim Larson	Village Green - Home & Garden
Capri Restaurant	Lawnscapes	Mark West
David and Julie Claeysens	Brad Lindeblad	Dr. Daniel Weyrauch
Clodius Jewelers	Pamela Lindstrom	Mrs. Geraldine White
Colorlab Cosmetics	Lino's	Audrey Williams
Leslie Crow	London Avenue Designs	WM Day Spa Salon
Custom Playgrounds	Lucha Cantina	Xeno Salon & Day Spa
Denise Delanty	Luxe Nail Bar	
Tim and Deb Dimke	Meyer's Canine Colony	
Discovery Center Museum of Rockford Inc.	Midway Village Museum	
Andy and Karen Dylak	John Milani	
Terri Ekberg	Janet Moore	
Nicole Engelbart	Scott and Becky Morris	
Estwing	Layne Nelson and Lori Berkes-Nelson	
Eurostyle	Nicholas Conservatory & Gardens	
Robert Farrell	Paul Nimtz	
Deb Fredenburg	Orangetheory Fitness	
Fringe	Peak Fitness	
Fur Company	Pinnon Meats	
Max Gersh	Prairie Street Brewing Company	
Laura Gibbs-Green		
Giovanni's, Inc.		



Monica Glenny
Foundation Board President

FROM THE FOUNDATION BOARD PRESIDENT

Thank you to our fantastic Board of Directors and for your willingness to serve. You have brought passion, intelligence, insight, experience, and resources to the table, and I am honored to be serving with you on the Rockford Park District Foundation Board.

On behalf of the Board of Directors, we would like to thank our donors for making 2017 an extraordinary year for the Rockford Park District.

RPD FOUNDATION BOARD OF DIRECTORS

MONICA GLENNY

PRESIDENT
Mary Kay Independent
Beauty Consultant

KENT KOHLBACHER

VICE PRESIDENT
Northwest Bank

BOB FARRELL

TREASURER
CliftonLarson & Allen LLP

CHRISTIE JARRETT

SECRETARY
Stenstrom Construction

HAZEN TUCK

PAST PRESIDENT
Community Leader

BRUCE ATWOOD

Community Leader

BRENT BERNARDI

Alpha Controls & Services

DR. KENDALL BOONE

Affiliated Surgeons
of Rockford

VINT BUCKWALTER

UTC Aerospace Systems

JULIE ELLIOTT

Rockford Park District
Commissioner

GINO GALLUZZO

Nicolosi & Galluzzo, LLP

MIGUEL GRANADOS

Innovatech

TOM GREEN

Barrick, Switzer, Long,
Balsley & Van Evera LLP

GWYN GULLEY

Winnebago County

JORGE HERRERA

Rockford Bank & Trust

ZINA HORTON

Zammuto's & Sweet
Ambrosia Desserts

STEPHANIE JACOBS

BMO Harris Bank

RUSS JOHANSSON

Specialty Screw

TIM KNAUF

Williams-Manny
Insurance Group

EXCELL LEWIS

XL Academics Inc.

KYLE LOGAN

Illinois Bank & Trust

TOM MICHALOWSKI

Community Leader

DAN NICHOLAS

Community Leader

WEBBS NORMAN

Community Leader

REBECCA OLSON

Olson Ecological
Solutions

MIKE ROBINSON

OSF Saint Anthony Medical
Center

JOE SCANDROLI

Scandrol Construction Co.

YASHEKIA SIMPKINS

Hinshaw & Culbertson

JOHN TORRENCE

Laurel Plus

MAURICE WEST

Rockford University

JULIA ZIMMERMAN

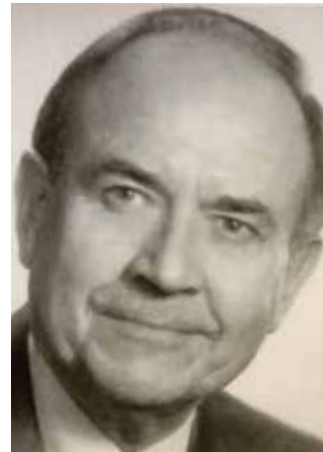
SwedishAmerican Health
Systems

JIM KEELING

Emeritus Director,
Hinshaw & Culbertson

DAVID WIEMER

Honorary Director



In Loving Memory of ROLF A. THIENEMANN JR.

Rolf served 19 years as a Rockford Park District Commissioner, including eight as president. He continued his public service as a member of the Rockford Park District Foundation for 20 years. Rolf was a dedicated husband, father, and grandfather, and was proud to call Rockford his home.

Rolf is deeply missed at the Foundation not only for his insight but for his humor. Funds are being raised to honor his many years of service to the Rockford Park District Foundation. If you knew Rolf and would like to contribute, please contact Lisa Alexander at 815-987-1632 or lisaalexander@rockfordparkdistrict.org.

RPD STAFF

LORI BERKES-NELSON

Foundation Director
815-987-1675

BRENDA SMITH

Executive Assistant
815-987-1630

LISA ALEXANDER

Donor Relations Coordinator
815-987-1632

KAREN DYLAKE

Accounting Manager
815-987-8868



FUNDamentals

news for friends of the Rockford Park District Foundation

401 S Main St STE 112 | Rockford, IL 61101 • online: rpdfoundation.org

NON-PROFIT ORG
U.S. POSTAGE PAID
Rockford, IL
Permit #1131



Help continue the legacy!

Donate today by calling 815-987-1630, or visit rpdfoundation.org

